



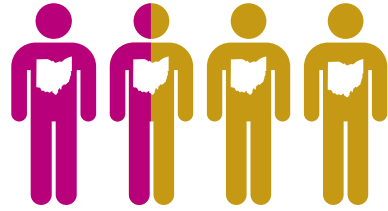
# OHIO

## Obesity Fact Sheet

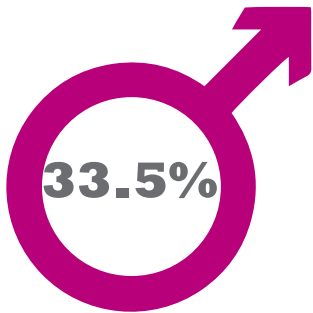
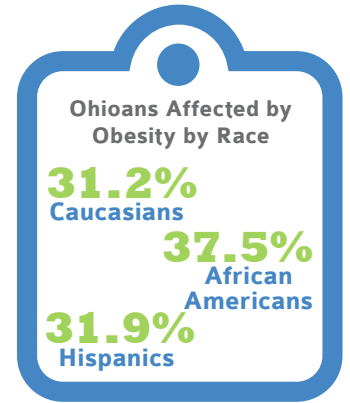


### ADULT OBESITY FACTS:

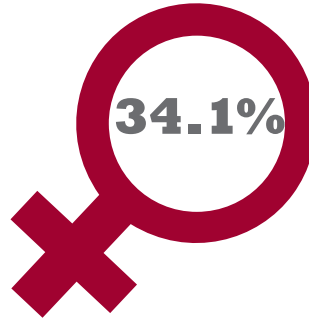
Obesity affects more than 33.8% of Ohioans.



Ohio is ranked 11/51 in states impacted by obesity.



More than 33.5% of male Ohioans are affected by obesity.



More than 34.1% of female Ohioans are affected by obesity.



The age group most affected by obesity in North Dakota is 45-64 (39.5%).

# 14<sup>th</sup>

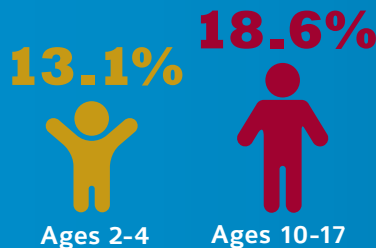
Ohio ranks 14<sup>th</sup> in adults with Type 2 Diabetes (11.3%).

### CHILDREN AFFECTED BY OBESITY IN OHIO:



Ohio **IS** one of 15 states that receives CDC grant funds for training to help with obesity prevention in Early Childhood Education settings.

### CHILDREN AFFECTED BY OBESITY



### COST OF OBESITY IN OHIO:

The total cost of obesity in Ohio

**\$51.15 BILLION**

The cost of obesity for Medicare in Ohio

**\$2.34 BILLION**

The cost of employment for the population with obesity is

**\$35.55 BILLION**  
more than the normal weight population.

### NATIONAL COST OF OBESITY:

**\$1.72 TRILLION**  
The total cost of obesity



Healthcare costs for individuals affected by obesity is

**42% HIGHER**

**\$1.24 TRILLION**

The total indirect cost of obesity

**\$480 BILLION**

The total direct healthcare cost of obesity

**\$2.9 BILLION**

The direct costs of childhood obesity

For people living with obesity,

**28.2%**

of their annual healthcare costs are spent treating obesity-related conditions.

#### Sources:

- Centers for Disease Control
- Clinical Chemistry
- Milken Institute
- Obesity Action Coalition
- Trust for America's Health



**OBESITY CARE**  
ADVOCACY NETWORK

### MISSION:

The mission of the Obesity Care Advocacy Network (OCAN) is to unite and align key obesity stakeholders and the larger obesity community around key obesity-related education, policy and legislative efforts in order to elevate obesity on the national agenda.

Learn more at [www.ObesityCareAdvocacyNetwork.com](http://www.ObesityCareAdvocacyNetwork.com) today!